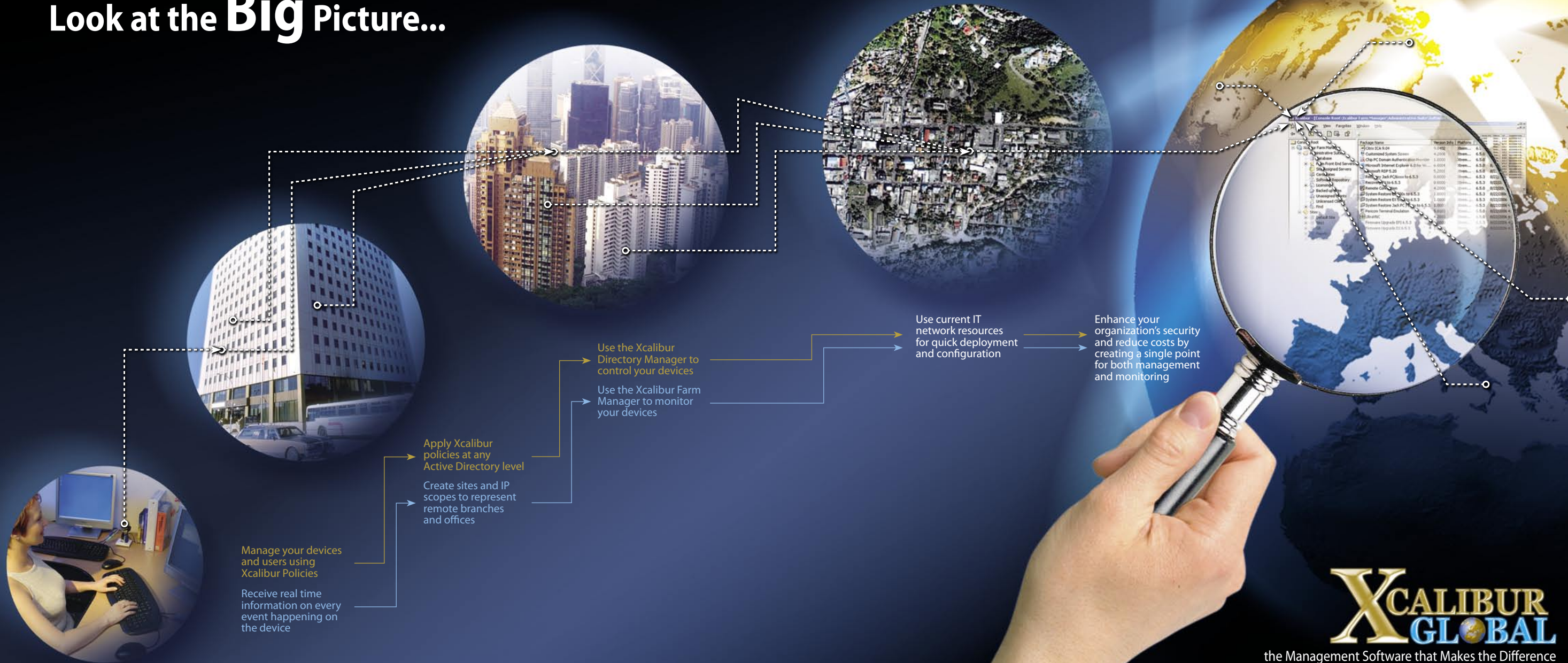


XCALIBUR GLOBAL

the Management Software that Makes the Difference



Look at the Big Picture...



XCALIBUR
GLOBAL

the Management Software that Makes the Difference

Xcalibur Global

In today's global market place, a dynamic, flexible and secure thin client management system is essential to ensure smooth and inexpensive maintenance and support. Xcalibur Global answers these needs while providing fault tolerance, speed, scalability and ease of management.

Xcalibur Global is the industry's best choice for large-scale, high-end management software. Xcalibur Global's unmatched scalability and reliability makes it the perfect thin client management software for the global enterprise. It's flexible, yet strong security architecture, as well as compatibility with key industry standards, lets Xcalibur Global meet the demands of your business.

Using Xcalibur Global you will be able to:

- Simplify administration of your thin clients to reduce costs
- Manage your devices from virtually anywhere
- Prevent unauthorized usage of devices
- Allow access to devices to authorized users only
- Improve productivity
- Leverage existing systems to create a single point of management
- Deliver personalized services based on users as well as devices
- Deploy thousands of remote devices without user intervention

Xcalibur Global Offers:

Scalability - In large-scale organizations, especially those that are geographically disbursed, scalability is crucial for easy and correct usage of thin devices. Utilizing additional Xcalibur Global Front End Servers ensures scalability and enables the management of a large number of devices.

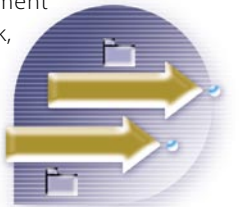


Logical Structure Representation -

Logical structure representation enables administrators to control and configure devices for users based on their needs rather than physical location or hardware and software settings. Xcalibur Global incorporates the organization's existing AD structure and builds an extended data base that includes management of the thin clients. Thus making it easy to have one comprehensive and updated company tree that leverages the Windows security and management permission delegation for both PCs and thin clients.



Bandwidth Control - In an environment deployed over a slow or limited network, it is imperative that the administrators are able to control the bandwidth parameters in order to ensure smooth workflow. Xcalibur Global has several built-in mechanisms for bandwidth control, such as compression and packet size-control.



Easy to Use - Scripting based management is quite demanding in terms of training and real time management. Xcalibur Global, on the other hand, is based on a policy model which will be familiar to any system administrator who uses Active Directory. Xcalibur Global is also 100% GUI-based and does not require any scripting to manage and configure devices.



User Level Settings - User level settings is an important benefit of Xcalibur Global. It is possible to use Xcalibur Domain Authenticator to create user level policies and apply them to a user or a group of users. Those settings will follow the users and will be used as a Roaming Profile for them.



Xcalibur Global at a Glance

- ✓ The only policy-based management software for thin clients and users, similar to PC policy-based management
- ✓ The only dual-mode, flexible management software, combining Logical (Active-Directory-Based) and Physical (Xcalibur Farm Based) management models for maximum ease and control
- ✓ Full Real-Time monitoring of device and changes applied both remotely and locally on the devices
- ✓ Minimum training required to achieve full proficiency due to the similarity to standard PC management tools
- ✓ Specifically adapted for limited bandwidth networks on a per - Xcalibur - site basis
- ✓ Single-point-of-total-control for users, groups & thin clients
- ✓ Advanced search options allowing easy creation of comprehensive reports and logs
- ✓ Full synchronization with Windows 2000/2003 Active Directory
 - Uses Active Directory existing tree-structure interface for task-management
 - Uses existing Active Directory permission delegation and inheritance model to assign management permissions

- ✓ Highly secured management suite with built-in support for SSL encryption, compression, port number control, bandwidth control & more
- ✓ TCP-based management protocol ensuring safe and supervised software deployment and remote configuration
- ✓ Scalable to add Xcalibur Front End Servers to the Xcalibur Farm as needed
- ✓ Built-in redundancy & load-balancing
- ✓ Remote software deployment, upgrade & recovery
- ✓ Centralized configuration and troubleshooting of devices
- ✓ MMC snap-in interface functioning as part of a complete, standard organizational management environment



IT that Makes Sense - Xcalibur Logical Management Model

Synchronizing with Microsoft Active Directory - Xcalibur Global Logical Model

Xcalibur Global extends your existing Active Directory tree view to include thin clients instead of building a stand-alone management tree that represents only thin client administrative needs. You can benefit from the existing AD tree structure, save management overhead, leverage Windows security and make thin client management as simple and efficient as PC management by applying Xcalibur Global Policies for thin clients at any Active Directory level.

Integrate thin clients into the Active Directory view

The Xcalibur Global Directory Manager snap-in is an enhanced Active Directory users & computers view. It display both the Xcalibur Global objects and the original Active Directory objects under the same interface without modifying the Active Directory schema.

Use the existing Active Directory tree structure to perform thin client management

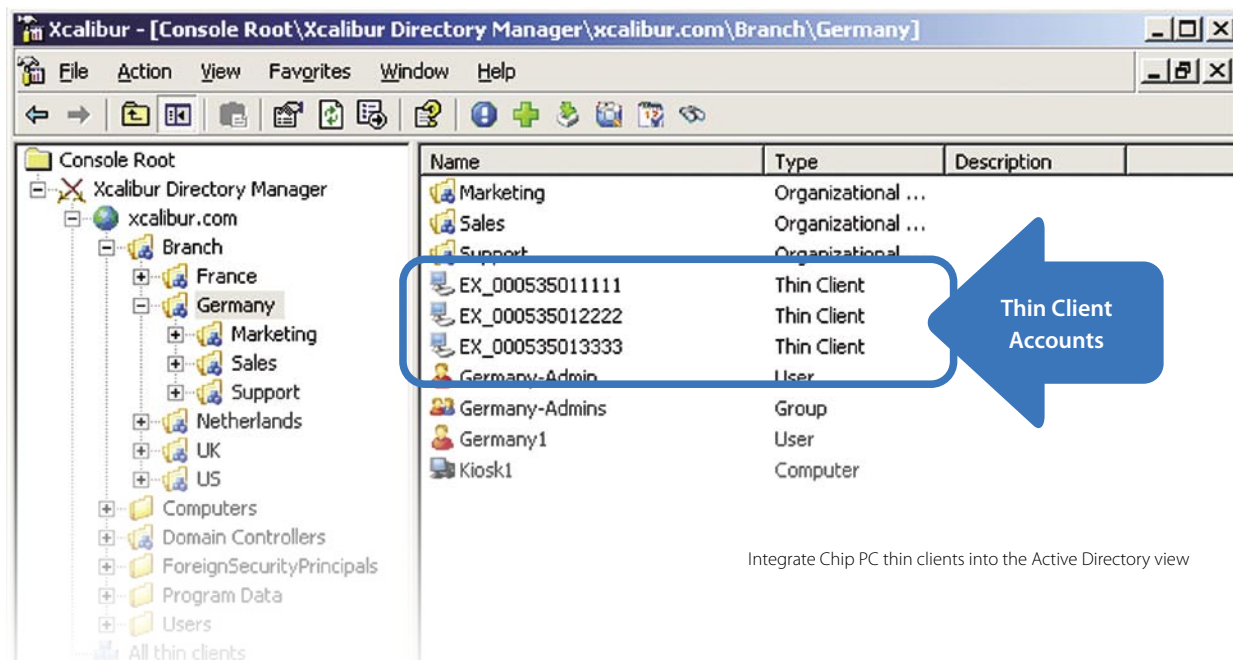
Save thin client management overhead and take advantage of your existing Active Directory tree by assigning thin clients into Active Directory OU's and applying Xcalibur Global policies on them.

Assign Xcalibur Global policies to devices and users at any Active Directory level

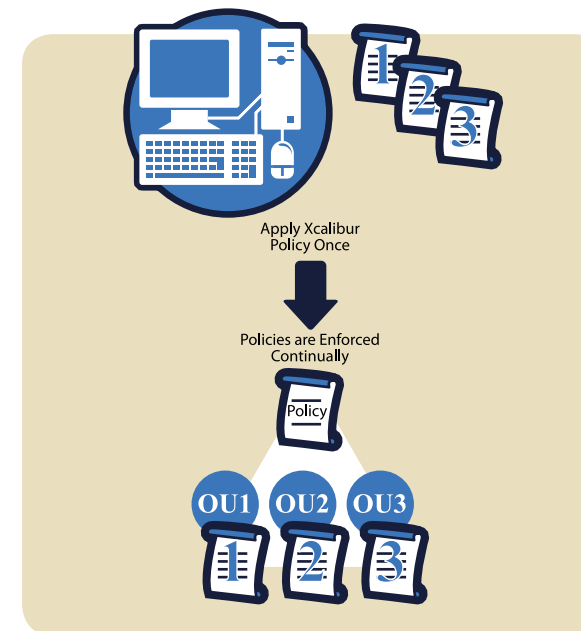
Xcalibur Global 1.1 management is based on a policy model. An Xcalibur Global policy is a set of rules defining client device settings based on the device's location in the Active Directory tree and the location of the account of the user who is logged-in on the device. By using Xcalibur Global Policies you can define client and user settings once and then rely on the Xcalibur Global to constantly enforce your policy settings throughout the network.

Leverage Windows security and rights delegation to assign thin client management permissions

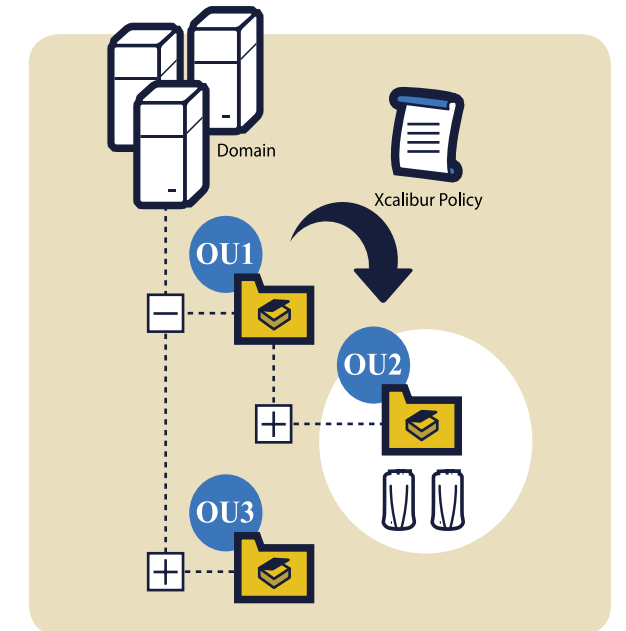
Xcalibur Global leverages Windows security by using the same delegation settings specified for the Active Directory. For example, user accounts that are assigned with group policy creation rights in the Active Directory automatically have Xcalibur Global policy creation rights as well.



Integrate Chip PC thin clients into the Active Directory view



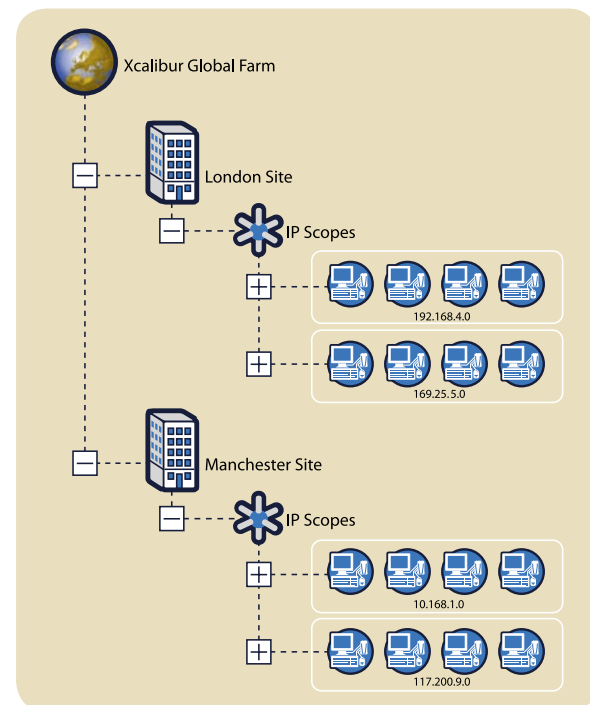
Assign Xcalibur policies at any Active Directory level



IT within Reach - Xcalibur Physical Management Model

Mapping the Network Infrastructure - Xcalibur Global Physical Model

IT companies today have more than one physical location and networks span between multiple branches with different latency and bandwidth rates. Xcalibur Global maps the physical network layout of your company so that you can perfectly adjust the bandwidth utilized by thin client management tasks, defined under the logical management level, while considering network limitations.



Map your network layout into the Xcalibur Global farm

Optimize network utilization by mapping your network layout into the Xcalibur Global Farm - The Xcalibur Global Farm allows mapping the organization's physical network layout by creating sites that represent branches and IP Scopes used in every branch. Based on the farm structure, administrators can configure software deployment rules while considering network limitations, such as bandwidth.

Scalable and redundant by supporting multiple server instances.

Benefit from SSL encryption, traffic compression, port number control, bandwidth control and more - Xcalibur Global uses an Independent Management Protocol (XIMP) that has built-in support for secured (SSL) communication, data encryption, compression, port number and bandwidth control.

Automate software distribution, image upgrades and recovery by configuring the software-installation-services at the farm / site / IP scope level - Xcalibur Global Installation Services are responsible for software distribution and have configurable properties including service operation hours (schedule), bandwidth limitation and maximum simultaneous connections queue length.

Automatically discover thin clients - Distribute a list of Xcalibur Global servers to your thin clients so that they can automatically connect to the management system. You can distribute this list from multiple sources including: DHCP (Standard and Vendor class), SNMP, DNS and Xcalibur Global Policy.

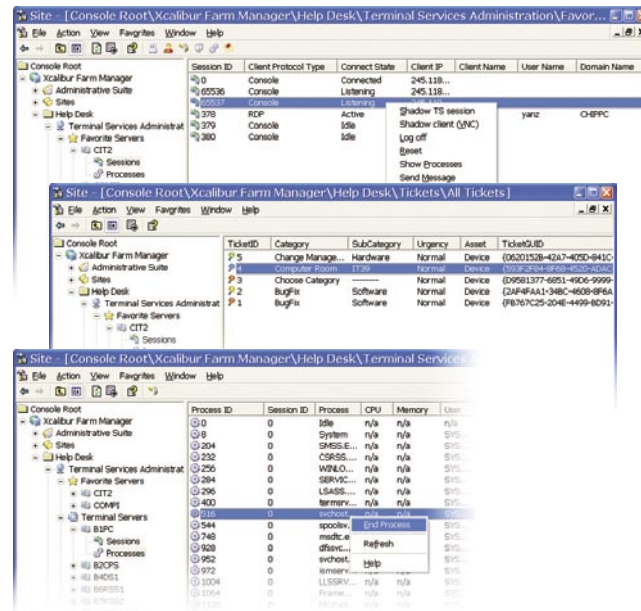
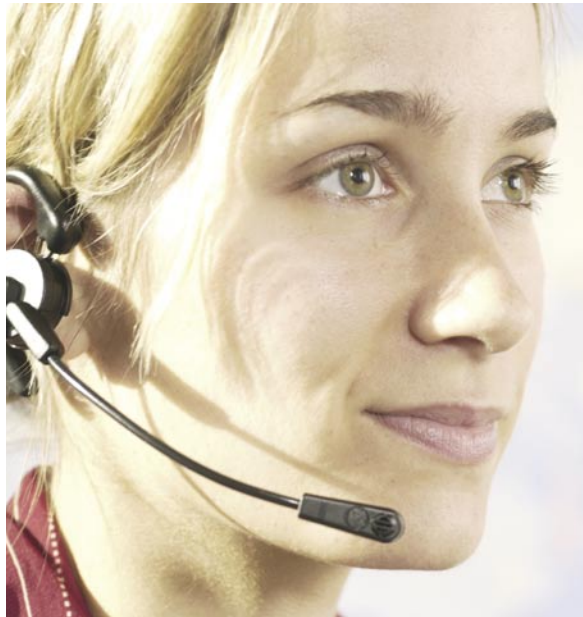


Help Desk & Session Management

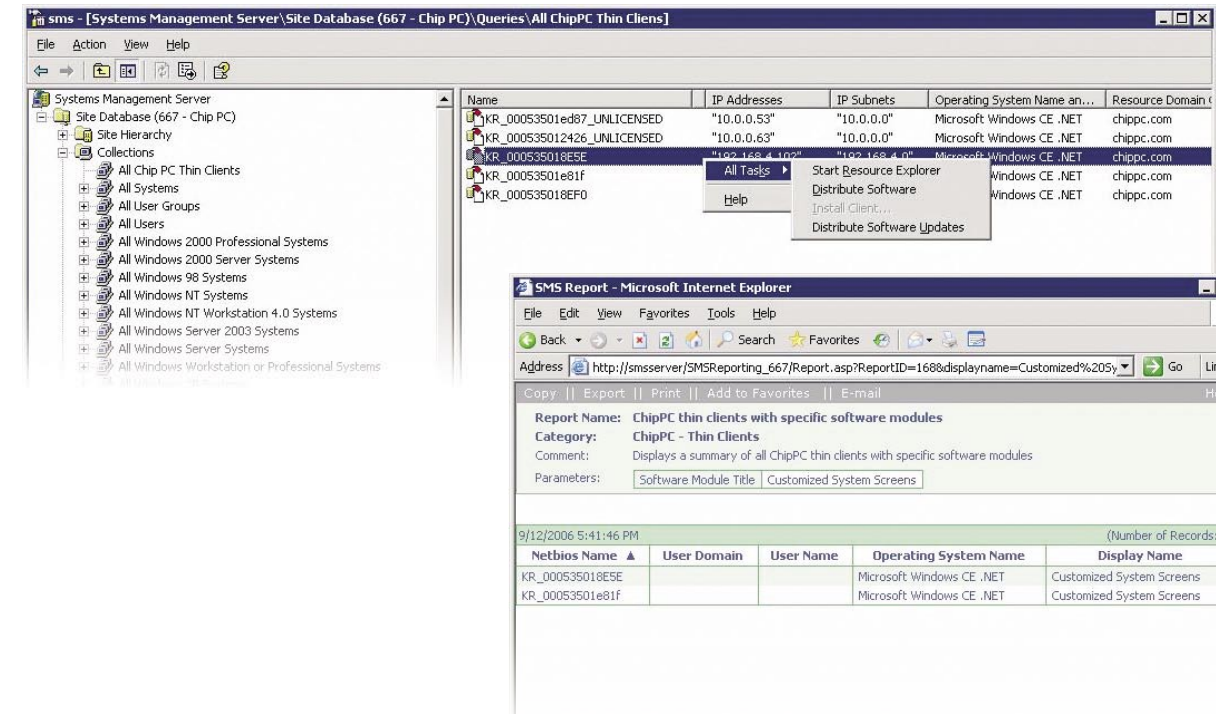
In global enterprises employees encounter problems with their thin clients, printers, and other software and hardware tools. Xcalibur's Help Desk component enables Information Technology departments to manage, sort, and track service requests using the most efficient methods. The results of using Xcalibur Help Desk and Session Management components are lower TCO and higher employee productivity and satisfaction.

Using Xcalibur Global Help Desk & Session Management components you will be able to:

- ✔ Let end users submit service requests
- ✔ Shadow sessions directly from Xcalibur Global
- ✔ Monitor connected devices
- ✔ Sort, search through, and deal with service requests using an efficient methodology
- ✔ Generate reports on the state of your help desk
- ✔ Utilize various features such as escalation, automatic notifications, knowledgebase, and more



Microsoft SMS Connector



Xcalibur Global connector to Microsoft SMS makes it possible to update your SMS database with thin client hardware and software information.

Efficient inventory and asset management are crucial for the global enterprise to increase productivity and ensure smooth operations.

Environments that implement SMS as their preferred systems management solution can use the Xcalibur Global SMS

integration component to streamline administration, collect in-depth asset data and create more efficient hardware inventory.

Comprehensive reports can be created in real-time to reflect the organization's IT infrastructure and to provide a unified view of all network assets including thin client hardware and software.

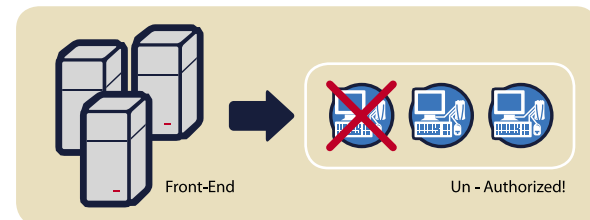
Secure IT

Top Security Management - Xcalibur Global Secure Authenticator

Xcalibur Global provides a secured mechanism that allows controlling which thin clients can be used, who can use them and who has permissions to add thin clients to the system.

The Xcalibur Global Secure Authenticator leverages Windows security so that you can control the thin client device usage for asset management and security purposes by authenticating the thin client device users in front of the Active Directory.

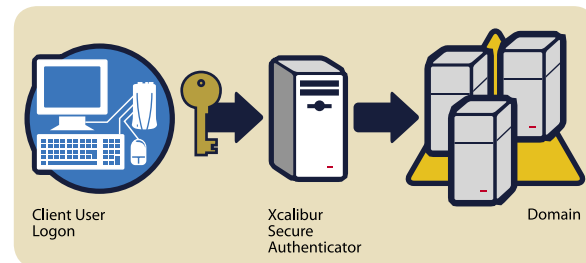
For security and asset management reasons, use device-authentication to prevent unauthorized device usage - Ensure that only authorized thin client devices can be connected to the system and used. Various rules and settings may be applied to both unauthenticated and authenticated devices. For example, Xcalibur Global automatically locks unauthenticated devices.



Asset management- Device authentication maps all the thin clients in the Xcalibur Global system thus letting you know exactly which devices are being used and what is their physical location.

Control spare device usage - By isolating and blocking spare devices from active, deployed devices, you get better control over your assets assuring that spare company property is not used without permission.

Securely authenticate thin client users in front of your domain - Use the Xcalibur Global Secure Authenticator to securely authenticate thin client users in front of the Active Directory. This service allows thin clients to become part of a security realm regardless of their OS limits.



Restrict users to logon only to specific thin clients - Device and network security can be tightened further by restricting user's logon privilege to devices that belong to a certain OU or to a specific device.

Secure single sign-on - Credentials used during the logon process can be cached for pass-through authentication. The single sign-on support maps user credentials into any process that requires authentication thus requiring users to provide credentials only once during device logon.



Xcalibur Global in Verticals



Xcalibur Global in Government / Municipalities

The Challenge: Provide high security, fully manageable solutions.

The Solutions: Cardiff City Council and Newcastle City Council in the UK have implemented large deployments of EX devices accompanied by Xcalibur Global.

At Cardiff over 800 Chip PC thin-client devices were deployed as the first phase of moving to a server-based computing infrastructure at Cardiff City Council.

Devices are managed with Xcalibur Global management software enabling central management from a single location.

Newcastle City Council has deployed several hundred Xtreme PC thin client devices and are planning to ultimately deploy over 1,500 devices.

Both Cardiff and Newcastle are using Xcalibur Global Domain Authentication to prevent unauthenticated users from accessing and using the thin client device.

Xcalibur Global in Services

The Challenge: Provide long-life cycle solutions remotely managed.

The Solutions: Ingeus Europe is one of the leading welfare-to-work providers to achieve the goal of supporting individuals into suitable, sustainable employment. The Ingeus group employs over 1,000 people around Europe and in Australia.

Ingeus UK, Germany and France are in the process of rolling out several hundred Xtreme PC thin clients accompanied by Xcalibur Global management software, including the Domain Authenticator extension. Based on Xcalibur Global. Ingeus is using Active Directory tree structure for management tasks and permissions allocation. The final phase will include over 900 devices.

Chip PC, with its highly reliable and longest life-cycle products including global-level management software was the ultimate choice for Ingeus Europe.

Xcalibur Global in Finance, Banking

The Challenge: Provide highest security, remotely managed solutions

The Solutions: Chip PC solutions are highly attractive to the finance market and have been chosen by national banks, such as Friesland Bank in the Netherlands, as well as by Global Banks such as BNP Paribas.

Over 1,300 Chip PC devices are now being deployed in the first phase at the global bank of BNPP. The first stage implementation of Xtreme PC with Xcalibur Global included the countries of UK and France and will later be deployed all over the world.

Devices are configured using Xcalibur policies for high security limiting the desktop appearance to a single connection icon.

Xcalibur Global in Health Care

The Challenge: Providing a flexible, secure and scalable solution

The Solution: In the health care industry most devices are deployed in public areas where many different users have access to the devices. It is essential that users be authenticated and that each user receives their personal settings and connections based upon their profile. Xcalibur Global is the perfect solution for this dynamic configuration environment. Xcalibur provides user level policies that enable the devices to be configured after the user log-on to ensure correct user personalized settings are established. Security is enhanced using Xcalibur Domain Authenticator component ensuring only authenticated users will be able to access the device. Additional Front End server where added to ensure redundancy and scalability in this demanding 24-7 environment.

Chip PC - Thin Clients Complete IT Solution

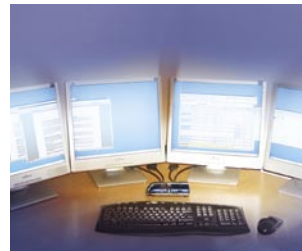
You have already started to fuel business efficiency and increase savings with your Server-Centric solution. Now it is time to extend it to a complete thin client solution—strong, secure, smart and small.

With Chip PC thin clients you can reduce complexity and increase control. Chip PC thin clients offer an innovative wide range of clients including models with DVI/Analog video supporting multi-screens (dual and quad) and wide screens (16:9). The user experience is optimized while the management software provides full control and monitoring of users & groups as well as devices.

With Chip PC thin clients you can maximize cost savings and leverage security. Chip PC thin clients are the world's lowest power desktops. Combined with top performance and leading management software they contribute to maximum cost savings.

Security-by-design is a built-in feature of Chip PC thin clients and software. Devices can be physically locked into place preventing the possibility of damage and theft. The local software image is 100% virus-immune, while the management software leverages Windows security by offering the secure authenticator extension.

With its great performance, high security and easy deployment the Xtreme PC is the thin client of choice for enterprises and organizations around the world. This is the next step in thin client technology - complete solutions that are strong, secure, smart and small.



Features

✓ Patented RISC-based Hardware Architecture

✓ Separate Video Memory

✓ DVI Video Out

✓ Multi Screen Support

✓ Wide Screen Support

✓ PDA Synchronization

✓ Plug-and-Play Connectivity

✓ Low Power Consumption

✓ Integrated PKI Smart Card Reader/Writer

✓ Data Security and Integrity

Benefits

Alchemy au processor, Flash up to 64 MB DOC, DDR RAM up to 128 MB

4-16 MB separate Video Memory dedicated only to video performance

Digital Video Connectivity to LCD modem screens offering best-picture quality and user convenience; Analog output also supported

CE-based device offering models supporting Dual as well Quad (4) Display functionality

Support for Wide Screens 16:9

CE-based device offering full PDA synchronization

Fast and easy installation and deployment

Only 5W at full work mode

Increased Security by demanding to perform two factor authentication-Physical Smart Card and PIN code

No data is stored on the client so it cannot be stolen or lost

✓ Virus/Trojan Immunity

✓ Fully Customizable Desktop Interface

✓ Fully Modular Operation System

✓ Latest ICA, RDP

✓ Multiple Sessions

✓ Jack PC - Patented "Computer in a LAN Jack" architecture

✓ Jack PC - The first PoE Computer

Local operating system and additional software components are signed with Digital Signature so malicious code cannot run on the device

Increased user productivity by providing familiar easy-to-use User Interface

Provider a tailor-made station to each user

Protocols include Chip PC enhancements

Increased user productivity by enabling multiple sessions running on multiple servers simultaneously

- Full physical protection from damage & theft
- Literally ZERO desktop space
- Integration with Existing Standard Enterprise Infrastructures (LAN, PoE)

Designed to receive PoE directly or through mid-span injector, including support of pre-standard PoE.

Xtreme PC - Thin Clients



Xtreme PC is the most feature-rich thin client platform on the market today. Supported by the award-winning Xcalibur XP and Xcalibur Global management systems, it is the most secure, modular, and manageable Thin-Client solution offering connection to any type of popular Terminal, Citrix or Legacy servers.

Xtreme PC-EX and EX-NG thin clients range from basic, cost-effective models to advanced enterprise models; Featuring high security, extensive local functionality, wide selection of software plug-ins and advanced management solutions.



Xtreme PC thin clients are built around patented cold RISC architecture for highest reliability and longest service life.

Xtreme PC deployment is fully automated by using Xcalibur Global remote management software system. This is a real plug-and-play solution - Just connect the client to your network and the rest will happen automatically.



Jack PC - Thin Clients



Jack-PC is a versatile, feature-rich thin client computer fully integrated into an existing network Jack. With the **Jack-PC** you can quickly and easily convert an existing LAN jack into a fully-working, remotely-managed computer without installing additional cabling.

The device is neatly embedded inside the LAN jack, connected at the back side through Ethernet cable to the building LAN and Power-over-Ethernet infrastructure, when available.

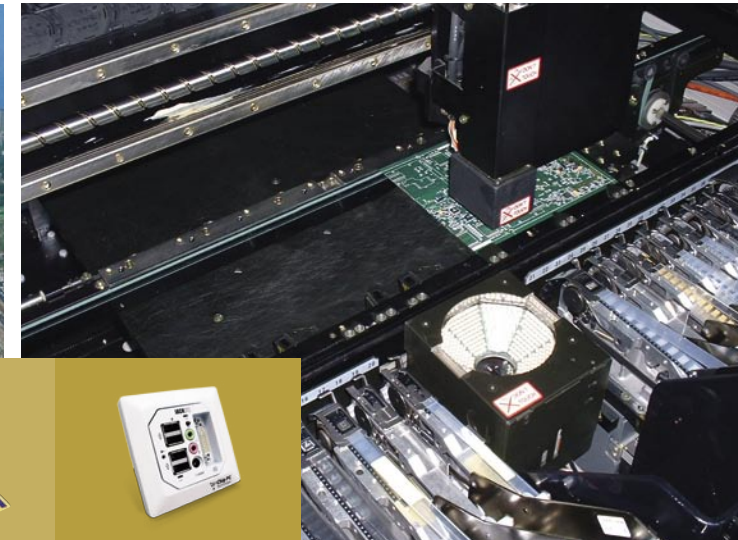
The front panel is connected through cables or wirelessly to keyboard, mouse and other peripherals.

Jack-PC deployment and on-going maintenance is a real Plug & Play solution as everything is automated by using the Xcalibur Global remote management software. Just connect the Client to your network and the rest will happen automatically.

Configuration is quick and painless, management is fast and effective, and installation couldn't be easier. User experience is optimized while management software provides full control and monitoring of users & groups as well as devices.



Chip PC - Making IT a Complete Solution



Chip PC offers industry-leading, end-to-end thin client solutions featuring:

Control – policy-based Xcalibur Global Management Software fit for large scale environments with full control & simultaneous support of thousands of clients & Users. Xcalibur Global owns MMC-Based Interface providing for fault tolerance, speed, scalability and ease of use.

Performance - micro form-factor, powerful thin clients, including the Xtreme PC-EX and EX-NG series and the LAN-integrated, PoE Jack PC-EFI series. Jack PC - not only a thin client - is part of an enterprise-level-solution of the Flex Jack.

Security -highly-secured solutions including robust modular image, Users authentication and much more.

Chip PC is the largest supplier of thin clients for various organizations. Chip PC products were rated first worldwide in an independent Thin-Clients-Evaluation among 26 thin clients from 9 vendors. Among Chip PC satisfied customers are top global organizations from various verticals, such as Healthcare, Finance, Defense, Government, Education and more.

Xtreme PC EX and **NG** thin clients range from basic, cost-effective models to advanced enterprise models; Featuring high security, extensive local functionality, wide selection of software plug-ins and top remote management solutions. **Xtreme PC** thin clients are built around patented cold RISC architecture for highest reliability and longest service life.

Xtreme PC thin clients offer advanced display support with DVI Video-Out supporting both analog and DVI screens. Some of the models support multiple screens – dual to quad (2-4). Wide screen 16:9 is also supported by Chip PC thin clients.

Jack-PC - Chip PC continues to lead the thin-client market with the ground-breaking **Jack-PC**, a versatile thin client computer fully integrated into an existing LAN port. **Jack-PC** is a patented technology that converts a standard LAN Jack into a fully managed desktop. This unique concept of “computer in-the-wall” unfolds important advantages to enterprise IT managers and decision makers. The **Jack-PC** can be powered by Power-over-Ethernet or externally. Neatly embedded into enterprise LAN and PoE infrastructures, it is fully managed with new users easily and quickly added and configured remotely.



www.chippc.com

Chip PC International

Tel: +972 (4) 8501121
info@chippc.com

Chip PC UK

Tel: +44 (870) 6061007
info@chippc.co.uk

Chip PC Germany

Tel: +49 (201) 1850990
info@chippc.de

Chip PC France

Tel: +33 (6) 98165163
info.fr@chippc.com

Chip PC Benelux

Tel: +31 (79) 7503729
info.nl@chippc.com

Chip PC USA

Tel: +1 (877) 9244772
Tel: +1 (512) 2410250
info.us@chippc.com

© Chip PC Technologies, all rights reserved.
Subject to change without prior notice.
Images for demonstration purposes only.

CMD02832