



February 2009 Firmware and Software Updates

Release Notes

Document Version 1.0

COPYRIGHT NOTICE

© 2008 Chip PC Inc., Chip PC (Israel) Ltd., Chip PC (UK) Ltd., Chip PC GmbH
All rights reserved.

This product and/or associated software are protected by copyright, international treaties and various patents.

This manual and the software, firmware and/or hardware described in it are copyrighted. You may not reproduce, transmit, transcribe, store in a retrieval system, or translate into any language or computer language, in any form or by any means, electronic, mechanical, magnetic, optical, chemical, manual, or otherwise, any part of this publication without express written permission from Chip PC.

CHIP PC SHALL NOT BE LIABLE FOR TECHNICAL OR EDITORIAL ERRORS OR OMISSIONS CONTAINED HEREIN; NOR FOR INCIDENTAL OR CONSEQUENTIAL DAMAGES RESULTING FROM THE FURNISHING, PERFORMANCE, OR USE OF THIS MATERIAL.

The information contained in this document represents the current view of Chip PC on the issues discussed as of the date of publication. Because Chip PC must respond to changing market conditions, it should not be interpreted to be a commitment on the part of Chip PC, and Chip PC cannot guarantee the accuracy of any information presented after the date of publication.

This Guide is for informational purposes only. **CHIP PC MAKES NO WARRANTIES, EXPRESS OR IMPLIED, IN THIS DOCUMENT.**

TRADEMARKS

Chip PC, Xcalibur, Xtreme PC, Jack PC, and the Chip PC logo are either trademarks or registered trademarks of Chip PC.

Products mentioned in this document may be registered trademarks or trademarks of their respective owners

The Energy Star emblem does not represent endorsement of any product or service.

U.S. GOVERNMENT RESTRICTED RIGHTS

The Software and documentation are provided with RESTRICTED RIGHTS.

You agree to comply with all applicable international and national laws that apply to the Software, including the U.S. Export Administration Regulations, as well as end-user, end-use and country destination restrictions issued by U.S. and other governments.

The information and specifications in this document are subject to change without prior notice.

Images are for demonstration purposes only.

Table of Contents

TABLE OF CONTENTS	3
INTRODUCTION	4
COMPONENTS	4
FIRMWARE VERSION 7.0.1 BUILD 091401RL0 - SUPPORTED HARDWARE MODELS	4
FIRMWARE VERSION 7.0.1 BUILD 091401RL0 - NEW FEATURES AND FIXES	5
HOW TO ENABLE 802.1X AUTHENTICATION FOR A WIRED CONNECTION	6
HOW TO ENABLE THE BOOTP PROTOCOL	7

Introduction

This document describes all firmware and software updates released in February 2009 for Xcalibur Global Management Software and for Chip PC thin client devices.

IMPORTANT *This is a release of a new build of an existing firmware version. Attached are the release notes of the existing firmware version.*

Components

The February 2009 Firmware and Software Updates include the following components:

- Chip PC client device firmware, version 7.0.1 build 091401RL0 – **New Build**.

Firmware version 7.0.1 build 091401RL0 - Supported Hardware Models

Chip PC client device firmware version 7.0.1 build 091401RL0 is supported on the following hardware models:

- Xtreme PC: NG 64xx – NG 66xx
- Jack PC: EFI 68xx – EFI 69xx
- All models based on the 7xxx platform

Firmware version 7.0.1 build 091401RL0 - New Features and Fixes

Table 1 lists and describes new features and fixes introduced in the Chip PC client device firmware 7.0.1 build 091401RL0, released in February 2009.

Table 1: Firmware version 7.0.1 build 091401RL0

#	Feature / Fix	Description
1.	NEW – Support for wired 802.1x	Added the option to use IEEE 802.1x protocol for device authentication over a wired connection.
2.	NEW – Support for BOOTP	Added the option to use the BOOTP protocol.
3.	FIX – Optimized password protected screen saver	Improved the functionality of a password protected screen saver with published applications.

How to Enable 802.1x Authentication for a Wired Connection

1. Open the **WBT Configuration** dialog by clicking **Start > Settings > Device**.
2. Select the **Authentication** tab.

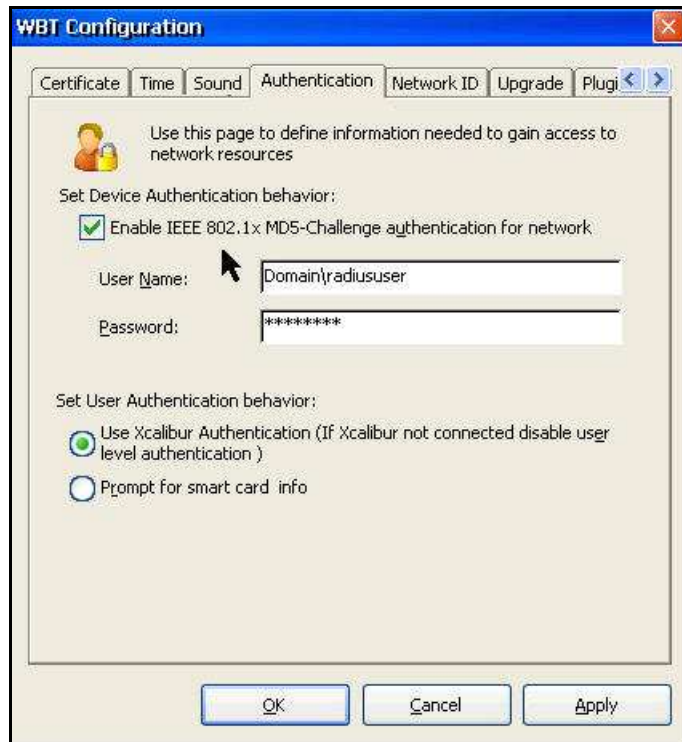


Figure 1 – Device & User Authentication behavior

3. Select the check box **Enable IEEE 801.1x MD5-Challenge authentication for network**.
4. Type the **User Name** and **Password** that are used for authentication.
5. To save and apply these settings, click the series of **OK** buttons until the device reboots.

NOTE For detailed information regarding the use 802.1x for a wired connection, refer to the following Microsoft document:
802.1X Authenticated Wired Access
<http://technet.microsoft.com/en-us/library/cc753354.aspx>

How to Enable the BOOTP Protocol

1. Open the **WBT Configuration** dialog by clicking **Start > Settings > Device**.
2. Select the **Network** tab.
3. Click the **Network Info** button to open the dialog **Network Info Obtained from DHCP**.

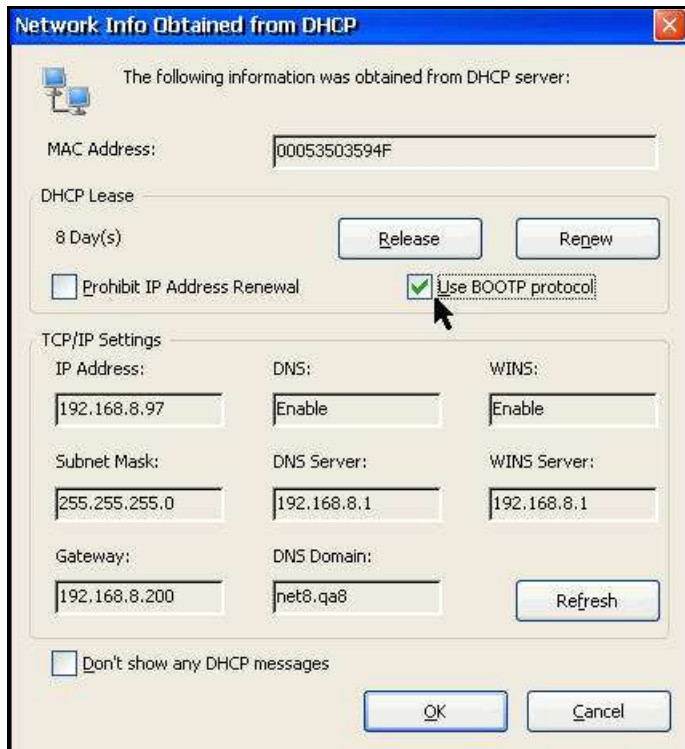


Figure 2 – Network Info Obtained from DHCP

4. Select the **Use BOOTP protocol** check box.

NOTE When the *BOOTP* protocol is selected, the device uses this protocol **instead** of the *DHCP* protocol and not in addition to it. The device will not receive a response from a *DHCP* server that is configured to use only *DHCP*.

5. To save and apply these settings, click the series of **OK** buttons until the device reboots.



November 2008 New Firmware and Software Updates

Release Notes

Document Version 1.0

COPYRIGHT NOTICE

© 2008 Chip PC Inc., Chip PC (Israel) Ltd., Chip PC (UK) Ltd., Chip PC GmbH
All rights reserved.

This product and/or associated software are protected by copyright, international treaties and various patents.

This manual and the software, firmware and/or hardware described in it are copyrighted. You may not reproduce, transmit, transcribe, store in a retrieval system, or translate into any language or computer language, in any form or by any means, electronic, mechanical, magnetic, optical, chemical, manual, or otherwise, any part of this publication without express written permission from Chip PC.

CHIP PC SHALL NOT BE LIABLE FOR TECHNICAL OR EDITORIAL ERRORS OR OMISSIONS CONTAINED HEREIN; NOR FOR INCIDENTAL OR CONSEQUENTIAL DAMAGES RESULTING FROM THE FURNISHING, PERFORMANCE, OR USE OF THIS MATERIAL.

The information contained in this document represents the current view of Chip PC on the issues discussed as of the date of publication. Because Chip PC must respond to changing market conditions, it should not be interpreted to be a commitment on the part of Chip PC, and Chip PC cannot guarantee the accuracy of any information presented after the date of publication.

This Guide is for informational purposes only. **CHIP PC MAKES NO WARRANTIES, EXPRESS OR IMPLIED, IN THIS DOCUMENT.**

TRADEMARKS

Chip PC, Xcalibur, Xtreme PC, Jack PC, and the Chip PC logo are either trademarks or registered trademarks of Chip PC.

Products mentioned in this document may be registered trademarks or trademarks of their respective owners

The Energy Star emblem does not represent endorsement of any product or service.

U.S. GOVERNMENT RESTRICTED RIGHTS

The Software and documentation are provided with RESTRICTED RIGHTS.

You agree to comply with all applicable international and national laws that apply to the Software, including the U.S. Export Administration Regulations, as well as end-user, end-use and country destination restrictions issued by U.S. and other governments.

The information and specifications in this document are subject to change without prior notice.

Images are for demonstration purposes only.

Table of Contents

TABLE OF CONTENTS	3
INTRODUCTION	4
COMPONENTS	4
FIRMWARE VERSION 7.0.1 - NEW FEATURES AND FIXES	5
FIRMWARE VERSION 7.0.1 – SUPPORTED HARDWARE MODELS	6
FIRMWARE VERSION 7.0.1 – SUPPORTED PLUG-INS	6
UPDATED PLUG-INS - NEW FEATURES AND FIXES	7
NEW PLUG-INS	8
KNOWN ISSUES	9

Introduction

This document describes all firmware and software updates released in November 2008 for Xcalibur Global Management Software and for Chip PC thin client devices.

Components

The November 2008 Firmware and Software Updates include the following components:

- Chip PC client device firmware, version 7.0.1 build 101610RL0 (based on Windows CE 6.0 R2).
- Plug-in Updates:
 - Chip PC Domain Authenticator Provider, version 1.00.01
 - Chip PC VDI Connection Broker, version 1.00.15
 - Citrix ICA 10.09 Connection, version 10.09.01 (XenDesktop edition)
 - Customized System Screens, version 4.20.08
 - ELO Touch creen, version 1.00.12
 - Internet Explorer Connection, version 6.00.11
 - LPD Printer, version 4.20.06
 - Microsoft RDP Connection, version 6.00.02
 - Pericom Terminal Emulation, version 6.00.00
 - Remote Connection, version 4.20.02
 - WinVNC Server, version 4.20.07
 - VDM Client, version 2.10.02

Firmware version 7.0.1 - New Features and Fixes

Table 1 lists and describes new features and fixes introduced in the Chip PC client device firmware 7.0.1 released in November 2008.

Table 1: Firmware version 7.0.1

#	Feature / Fix	Description
1.	NEW – Windows CE 6 R2	Based on Microsoft Windows CE version 6 release 2.
2.	NEW – RDP 6.0 support	Support for Microsoft RDP version 6.0.
3.	NEW – Improved Support for USB peripherals	Native support for an increased number of USB devices.
4.	NEW – Block device when XG is not available	Added an option to block the device when it is unable to contact Xcalibur Global.

Firmware version 7.0.1 – Supported Hardware Models

Chip PC client device firmware version 7.0.1 is supported on the following hardware models:

- Xtreme PC: NG 64xx – NG 66xx
- Jack PC: EFI 68xx – EFI 69xx

Firmware version 7.0.1 – Supported Plug-ins

Table 3 lists the plug-ins that are supported by Chip PC client device firmware version 7.0.1.

Table 2: Plug-ins Supported by FW v. 7.0.1

#	Name	Version	Release Date
1.	Chip PC Domain Authenticator Provider	1.00.01	July 2008
2.	Chip PC VDI Connection Broker	1.00.12	July 2008
3.	Citrix ICA 10.09 Connection	10.09.01 (XenDesktop edition)	July 2008
4.	Customized System Screens	4.20.08	July 2008
5.	Internet Explorer Connection	6.00.11	July 2008
6.	LPD Printer	4.20.06	July 2008
7.	Microsoft RDP Connection	6.00.00	July 2008
8.	Pericom Terminal Emulation	6.00.00	July 2008
9.	Remote Connection	4.20.02	July 2008
10.	WinVNC Server	4.20.07	July 2008
11.	VDM Client	2.10.01	November 2008

Updated Plug-ins - New Features and Fixes

Table 3 lists and describes new features and fixes for updated plug-ins released in November 2008.

Table 3: Updated Plug-ins

#	Feature / Fix	Description
1.	ICA: XenDesktop PNAgent autostart	Added the ability to autostart a PNAgent connection to a XenDesktop Desktop Group. The connection will start automatically when the device is started and will connect to an available desktop. NOTE <i>The Desktop Group name must include the string "startup" in order for the group to be autostarted.</i>
2.	RDP 6.0: New RDP client version 6.0.	Microsoft's latest RDP client for Windows CE, version 6.0 (Only supported by Chip PC firmware 7.0.1).
3.	RDP 6.0: Enhanced graphics for higher resolutions over multiple monitors.	Support for an RDP session resolution of up to 4096x2048 across multiple displays.
4.	RDP 6.0: Server authentication	Verifies that the thin client is connecting to an authorized remote server.
5.	RDP 6.0: Disable server authentication	Allows the user to disable the prompt for credentials during the RDP 6.0 server authentication.
6.	Pericom Terminal Emulation SSH Support	Increased security by adding support for SSH protocol in terminal session.
7.	Pericom Terminal Emulation Fixed printer list issue	Issue of missing printer models from the Printer Type\Model list in Advanced Printer Configuration dialog, has been fixed.
8.	VDI Broker: VirtualCenter 2.5 compatible	Upgraded compatibility now supports VMware VirtualCenter version 2.5.
9.	VDI Broker: SSL support	Added support for SSL secured communications between XcaliburGlobal and the VirtualCenter
10.	VDI Broker: Cluster view	Added support for selecting desktops based on their membership to a particular cluster.

New Plug-ins

Table 4 lists and describes new plug-ins released in November 2008.

Table 4: New Plug-ins

#	Name	Description
11.	VDM Client	Enables connection to a VMware VDM (Virtual Desktop Manager) Server. This server acts as the Desktop Broker for VMware's VDI solution. The VDM server allocates a desktop to the thin client and a RDP session (5.2 or 6) is opened from the client to the desktop. More information is available in the document: Ref: DG114H, "How to Use the VDM Client Plug-in"

Known Issues

1 XenDesktop – Sound

In order to enable support for sound in XenDesktop sessions the following settings are required:

1. Enter Device Settings
 - 1.1. From the **Start** menu select **Setting > Device**.
2. Configure Sound Settings
 - 2.1. Select the **Sound** tab in the **WBT Configuration** dialog.
 - 2.2. Click to clear the **Mute Mic** check box.
 - 2.3. Click to clear the **Mute Line Out** check box.
 - 2.4. Select the **Events** check box.
 - 2.5. Select the **Applications** check box.
 - 2.6. Click the **Apply** button in the Sound tab to save the modified settings.
3. Configure Citrix Connection Plug-n Settings
 - 3.1. Select the **Plugins** tab in the **WBT Configuration** dialog.
 - 3.2. Install the **Citrix ICA Connection** plug-in (the exact name may vary based on the ICA version) plug-in.
 - 3.3. After installation, select the Citrix ICA Connection plug-in from the **Available Plug-ins** chart.
 - 3.4. Click the **Configure** button.
 - 3.5. Select the **Settings** tab in the **Citrix ICA Connection Plug-in** dialog.
 - 3.6. Select the **Enable connection to USB storage devices** check box.
 - 3.7. Click the **OK** button in the settings tab to save the modified settings and to return to the Plugins tab.
4. Save Settings and Reboot
 - 4.1. Click the OK button in the Plugins tab to save the modified settings and exit the configuration dialog. The **Setting Changed** dialog will appear.
 - 4.2. In the Settings Changed dialog, click on the OK button to reboot the device.